



EVR 5

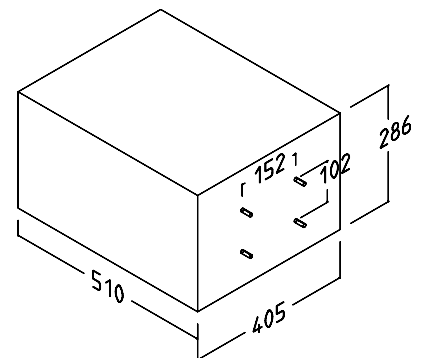
Low Level Environmental Luminaire

The EVR 5 is the smallest fitting in the ELSCO range. Designed to provide effective illumination for walkways and carparks, the low-mounting height (6m - 10m) reduces glare and light spill. The optical system is designed to provide high performance, long life and high lumen output.

EVR5 250W MH/HPS

SPECIFICATIONS:

Dimensions	510 x 406 x 286 mm
Weight	14Kg
Finish	Powdercoated satin black (standard) other colours by special order
Lamp	250W MH or 250W HPS
Lampholder	Porcelain E40 spring-loaded centre contact
Ballast	Reactor/ignitor
Part Numbers	EL102015 (250W 240V) EL102115 (250W 415V)

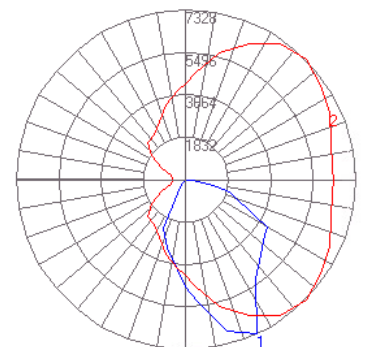


FEATURES

Control Gear	Pre-wired and mounted on single tray. Installed behind reflector. Integral.
Reflector	Sharp cut-off, forward throw, spectral reflector. High performance and minimal light pollution
Gasket	Twin vinyl-covered foam gaskets provide complete seal between glass frame and fixture body
Lens	Anodised extruded aluminium frame with reinforced corners incorporates 4mm toughened glass lens, securely fastened and silicon sealed into frame. Lens frame is hinged on one side of fixture body with stainless steel fixings
Housing	Aluminium. Completely sealed for protection from all weather conditions. Mounted via four stainless steel bolts at rear of fixture. Internal support frame to protect against body distortion.

Photometrics

■ Horizontal
■ Vertical



TOWERHEATH PTY LTD

Please contact:

Towerheath Pty Ltd, 31 Advantage Road, Highett VIC 3190
Phone: 03 9553 1528 Fax: 03 9532 5363 Email: sales@towerheath.com.au
www.towerheath.com.au

Towerheath Pty Ltd Guarantee:

All bodywork guaranteed for 5 years. Control gear guaranteed for 12 months